

KIRBY HALL

Reflecting a spacious dignity and innate hospitality, Helen M. Kirby Hall retains the features of authentic colonial architecture complemented by its setting of oak trees and green shrubbery. Named in honor of Helen Marr Kirby, who served for thirty-five years as the first Dean of Women in the University, the structure has provided a comfortable home for one hundred girls annually since its establishment in 1924. The dormitory was made possible through the activities of members of the Southern Methodist Church, the husband of Mrs. Kirby being one of the principal contributors of the fund to provide a pleasing and stimulating environment for girls during their attendance at the University.

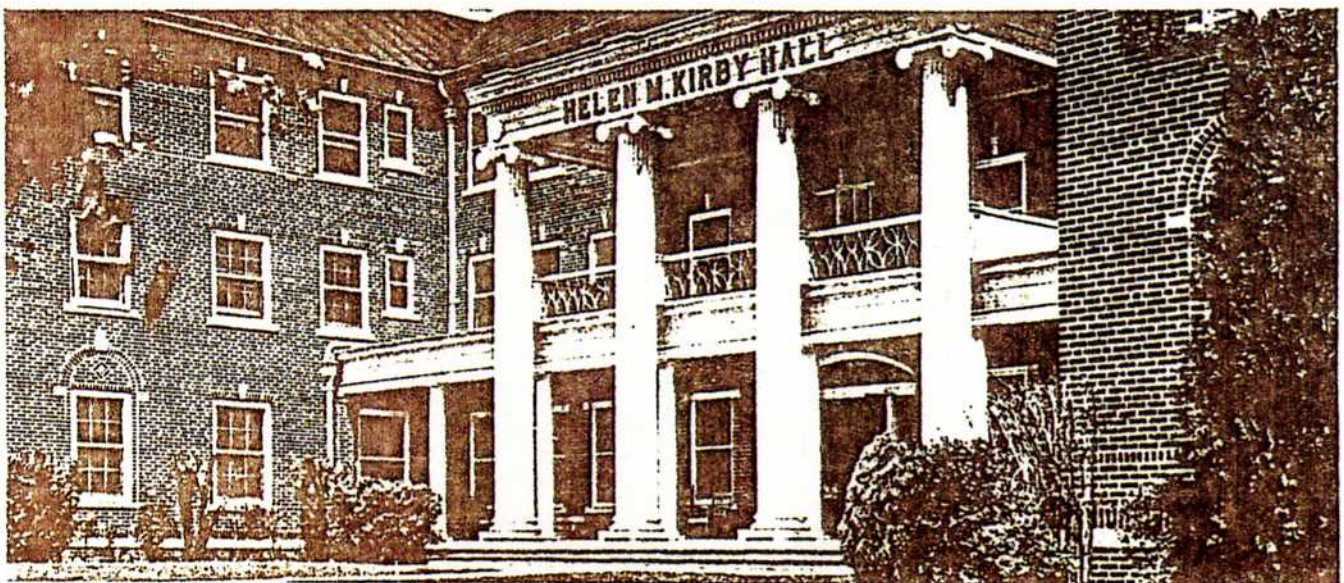
Social entertainments throughout the year are a feature of life at Kirby Hall. The outstanding events of the year are the spring and fall formals and open house held once a month for friends of the residents. A Thanksgiving and candle-lit Christmas dinner are traditional affairs of the holiday season; throughout the school semester holidays are observed with appropriate entertainments. Every three months Kirby Hall entertains with a social function in honor of all residents whose birthdays have occurred in the elapsed ninety days.

The management of the hall is under the supervision of a local board of directors composed of Mrs. T. A. Brown, chairman, Mrs. W. K. Gohlke, Mrs. M. Jones, and Miss Lilia Casis. The duties of the board include the supervision of all dormitory activity, the making of any improvements that will benefit the students who live there, and many other general tasks.

When Kirby Hall was opened in September, 1924, the board was composed of Mrs. T. A. Brown, who serves on the present board, Mrs. A. S. Whitehurst, and Miss Alma Hume.

The directing staff of Kirby Hall includes Mrs. B. R. Beeler, director, and Mrs. C. F. Yeager, business manager.

Members of the Kirby Hall House Council are Claudia Mae Dill, president; Virginia White and Mary Brantley, senior representatives; Margaret Dickson and Easton McNab, sophomore representatives; and Christine Burton and Patricia Downs, freshman representatives.



KIRBY HALL